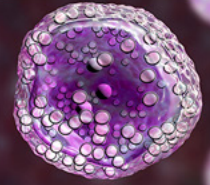


# MANAGEMENT OF LARGE B-CELL LYMPHOMAS: A CRITICAL UPDATE ON RELAPSED/REFRACTORY DIFFUSE LARGE B-CELL LYMPHOMA AND CAR T-CELL THERAPY



## Clinical Resources

Abramson JS, Palomba ML, Gordon LI, et al. Lisocabtagene maraleucel for patients with relapsed or refractory large B-cell lymphomas (TRANSCEND NHL 001): a multicentre seamless design study. [Lancet. 2020;396\(10254\):839-852.](#)

American Cancer Society: [Non-Hodgkin Lymphoma](#)

Caimi PF, Ai W, Alderuccio JP, et al. Loncastuximab tesirine in relapsed or refractory diffuse large B-cell lymphoma (LOTIS-2): a multicentre, open-label, single-arm, phase 2 trial. [Lancet Oncol. 2021;22:790-800.](#)

Duell J, Maddocks KJ, Barca EG, et al. Long-term outcomes from the Phase II L-MIND study of tafasitamab (MOR208) plus lenalidomide in patients with relapsed or refractory diffuse large B-cell lymphoma. [Haematologica. 2021;106\(9\):2417-2426.](#)

Johnson PC, Abramson JS. Patient selection for chimeric antigen receptor (CAR) T-cell therapy for aggressive B-cell non-Hodgkin lymphomas. [Leuk Lymphoma. 2020;61\(11\):3561-2567.](#)

Kalakonda N, Maerevoet M, Cavallo F, et al. Selinexor in patients with relapsed or refractory diffuse large B-cell lymphoma (SADAL): a single-arm, multinational, multicentre, open-label, phase 2 trial. [Lancet Haematol. 2020;7\(7\):e511-e522.](#)

Lee DW, Santomaso BD, Locke FL, et al. ASTCT consensus grading for cytokine release syndrome and neurologic toxicity associated with immune effector cells. [Biol Blood Marrow Transplant. 2019;25:625-638.](#)

Leukemia & Lymphoma Society: [Lymphoma](#)

National Comprehensive Cancer Network. B-Cell Lymphomas. Version 1.2022. [https://www.nccn.org/professionals/physician\\_gls/pdf/b-cell.pdf](https://www.nccn.org/professionals/physician_gls/pdf/b-cell.pdf)

National Comprehensive Cancer Network. Management of Immunotherapy-Related Toxicities. Version 1.2022. [https://www.nccn.org/professionals/physician\\_gls/pdf/immunotherapy.pdf](https://www.nccn.org/professionals/physician_gls/pdf/immunotherapy.pdf)

NCI SEER Program. Common Cancer Sites - Cancer Stat Facts. Non-Hodgkin Lymphoma. <https://seer.cancer.gov/statfacts/html/dlbcl.html>

Neelapu SS, Locke FL, Bartlett NL, et al. Axicabtagene ciloleucel CAR T-cell therapy in refractory large B-cell lymphoma. [N Engl J Med. 2017;377:2531-44.](#)

Schuster SJ, Bishop MR, Tam CS, et al. Tisagenlecleucel in adult relapsed or refractory diffuse large B-cell lymphoma. [N Engl J Med. 2019;380:45-56.](#)

Sehn LH, Herrera AF, Flowers CR, et al. Polatuzumab vedotin in relapsed or refractory diffuse large B-cell lymphoma. [J Clin Oncol. 2020;38\(2\):155-165.](#)

Zhou Z, Sehn LH, Rademaker AW et al. An enhanced International Prognostic Index (NCCN-IPI) for patients with diffuse large B-cell lymphoma treated in the rituximab era. [Blood. 2014; 123\(6\):837-842.](#)